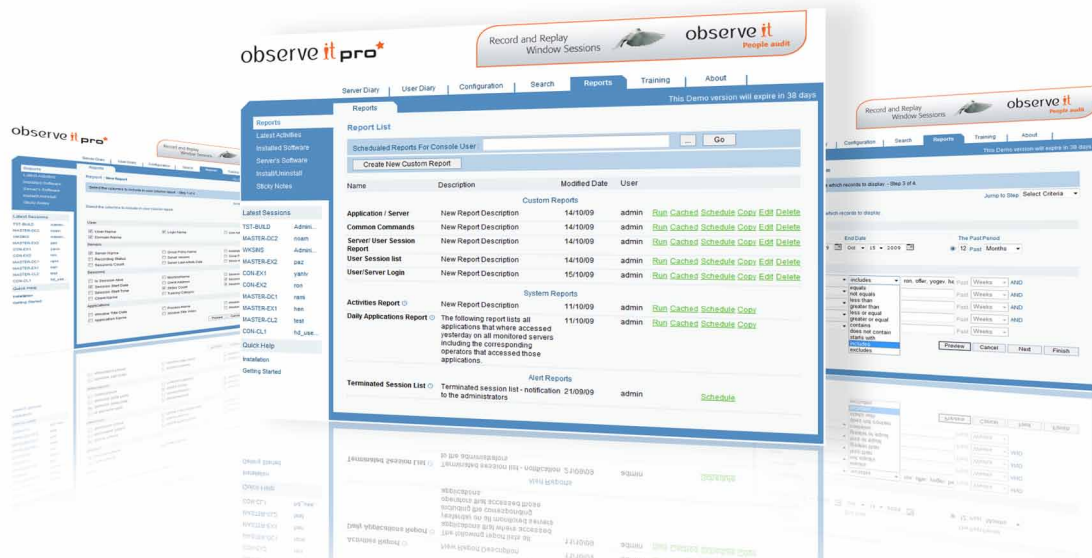


# observe **it**

People audit

## Record and Replay Terminal and Citrix Sessions



- ▶ Full video playback of all on-screen activities
- ▶ Monitor and record all remote and console access: Remote Desktop, Citrix, VDI, VMware View and more
- ▶ Fast troubleshooting and streamlined, secure compliance
- ▶ Real-time tracking and historical reporting



## Why Use ObservelT

### ► **Secure Compliance**

Detailed reports that track every access to your corporate servers and databases are generated and delivered automatically.

### ► **Remote Vendor Monitoring**

Know exactly what your 3<sup>rd</sup>-party vendors are doing on your servers.

### ► **Instant Troubleshooting**

Discover the root cause of system configuration changes, using detailed searching and video session playback.

## Key Features

**Complete Coverage** - Supports all console and remote access methods, with support for Citrix, Terminal Services, Remote Desktop, PC-Anywhere, VDI, VMware, VNC, NetOP, Dameware and more. ObservelT is agnostic to protocol and client application.

**Video Replay** - See exactly what users do on your servers, with video replay of each console and remote session.

**Policy-Based, Event-Driven Recording** - Flexible rules engine allows for inclusion or exclusion recording policies according to user and user groups, applications, file and file types, or specific keystroke events.

**Comprehensive Searching** - Locate the exact session you need, based on free-text searching and metadata fields including server name, user name, applications used, files accessed and more.

**Report Generator** - Generate detailed reports (ex: "Show all sessions that accessed the registry or financial spreadsheets on all servers over the past 10 days.") Customize report filters, grouping and sorting, export to XML/Excel and schedule automated report delivery.

# Enterprise Ready

**Small Footprint** - Ultra-efficient data storage (less than 250GB/year for high-usage, 1000 server environment.) Minimal Agent CPU utilization (0% when no console active, 1%-5% during session)

**Pervasive User Permissions** - Strong user permission management assures that only authorized users can access information. Permission-based filtering affects all content access, including reports, searching, video playback and metadata browsing.

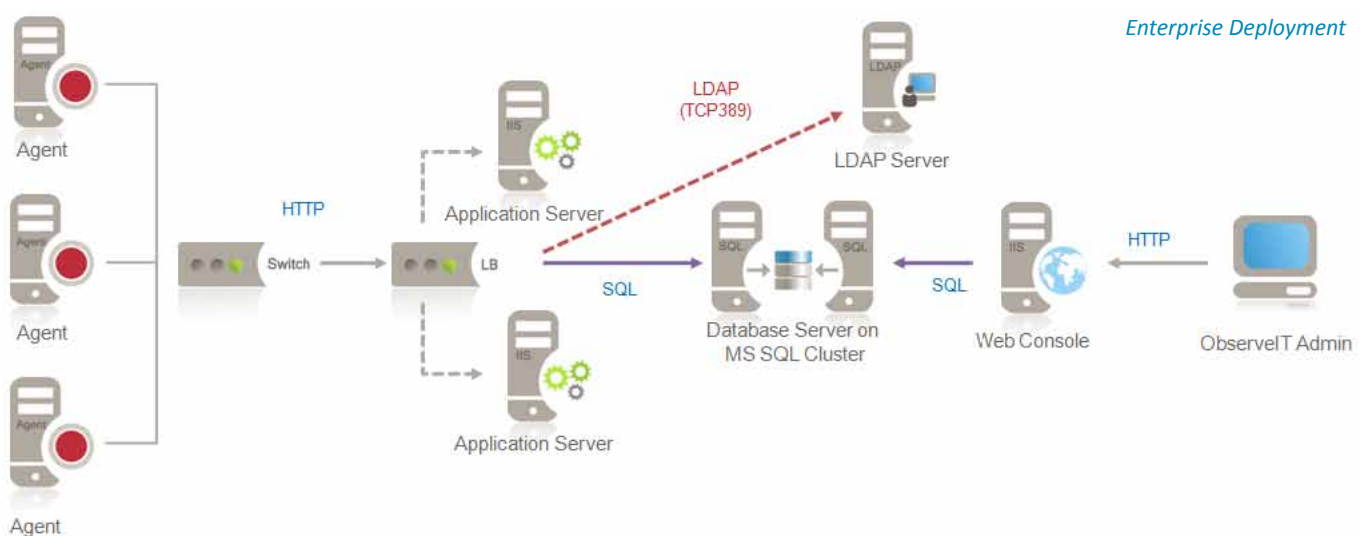
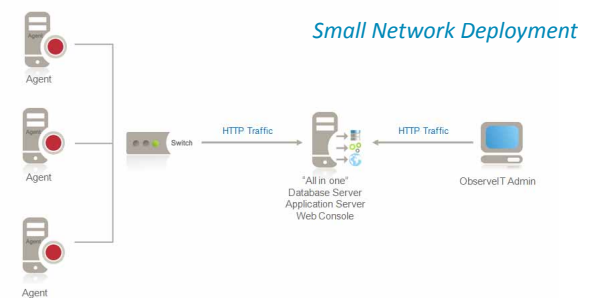
**Robust Security Architecture** - Designed for secure enterprise environments, including financial organizations, governments and sensitive customer privacy databases. All data captured by ObserveIT is digitally signed and encrypted, and access to the data is limited by permissions.

**System Monitor Integration** - Integrates with MOM, CA Unicenter and other system monitor platforms, giving you the power of window session instant-replay directly from within your existing security management environment.

## System Architecture

Distributed Microsoft ASP.NET application running on Microsoft Windows platforms, consisting of four components:

- ObserveIT Database Server (MS SQLServer)
- ObserveIT Application Server (ASP.NET)
- ObserveIT Web Management Console (ASP.NET)
- ObserveIT Agent (thin agent on each monitored server)



## How it Works

1. Each monitored workstation or server runs the ObserveIT Agent
2. The Agent encrypts information about user activity and sends it to the ObserveIT Application Server(s), where it is analyzed and stored on the ObserveIT Database Server(s)
3. The ObserveIT Web Management Console is a web-based interface for searching and reporting on captured user activity and configuring ObserveIT functionality

# System Requirements

## Agent

- MS Windows Server 2000/2003/2003 R2/2008, Windows 2000 Pro, Windows XP Pro, Windows Vista, Windows 7
- .NET Framework (version 1.1 minimum)
- 1 GHz or faster Intel or AMD processor
- 512 MB RAM or more
- 10 MB of free hard disk space
- 10/100 Ethernet adapter (Gigabit recommended)

## Application Server

- Microsoft Windows Server 2000/2003/2003 R2/2008
- Microsoft Internet Information Server (IIS) with ASP.NET
- .NET Framework
- 1 GHz or faster Intel or AMD processor
- 512 MB RAM or more (2 GB recommended)
- At least 10 MB of free hard disk space
- 10/100 Ethernet adapter (Gigabit recommended)

## Database Server

- Microsoft Windows Server 2000/2003/2003 R2/2008
- SQL Server 2000/2005, SQL 2005 Server Express Edition
- .NET Framework
- 1 GHz or faster Intel or AMD processor
- 512 MB RAM or more (2 GB recommended)
- 10 MB disk space per hour of Agent activity stored
- 10/100 Ethernet adapter (Gigabit recommended)

## Web Management Console

- Microsoft Windows Server 2000/2003/2003 R2/2008
- Microsoft Internet Information Server (IIS) with ASP.NET
- .NET Framework (version 1.1 minimum)
- 1 GHz or faster Intel or AMD processor
- 512 MB RAM or more (2 GB recommended)
- At least 10 MB of free hard disk space
- 10/100 Ethernet adapter (Gigabit recommended)



*People.*  
*Your most valuable asset. Your greatest risk.*